

# The Murray



Shown with optional  
unfinished basement



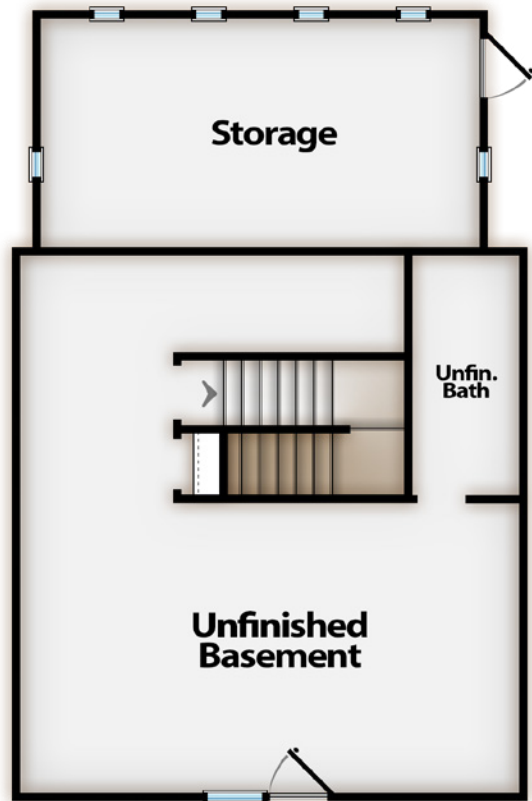
First Floor 924<sup>+/-</sup> sf - Second Floor 908<sup>+/-</sup> sf - Unfinished Basement 728<sup>+/-</sup> sf  
Front Porch 312<sup>+/-</sup> sf - Side Porch 36<sup>+/-</sup> sf  
**Total 3,012<sup>+/-</sup> sf | 3 Bedrooms | 2½ Bathrooms**



All information contained herein is deemed reliable but not guaranteed. All illustrations are artist's depictions only and are not meant to be exact and do not show accurate details as they will appear on the finished product. House orientation is determined by builder. All dimensions are approximate only and may differ from the actual home. No part of this brochure constitutes an agreement of any kind between Epic Homes and you. Elevations & floorplans may be shown with optional upgrades.

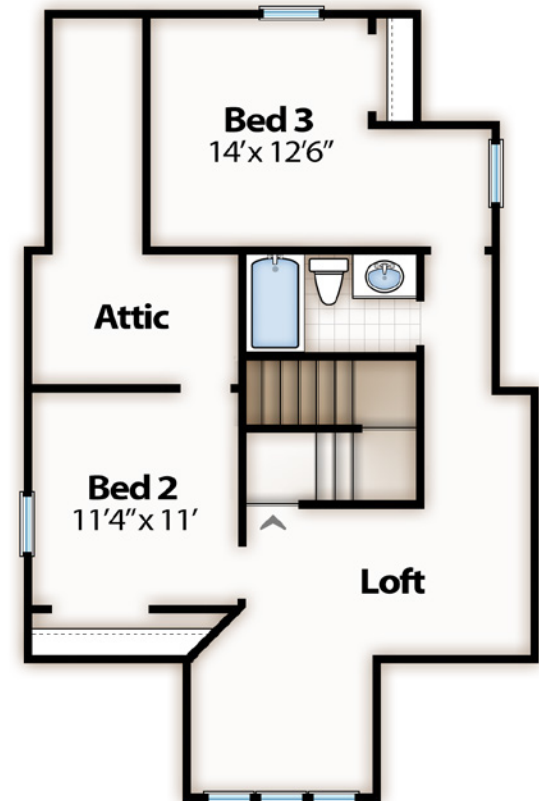
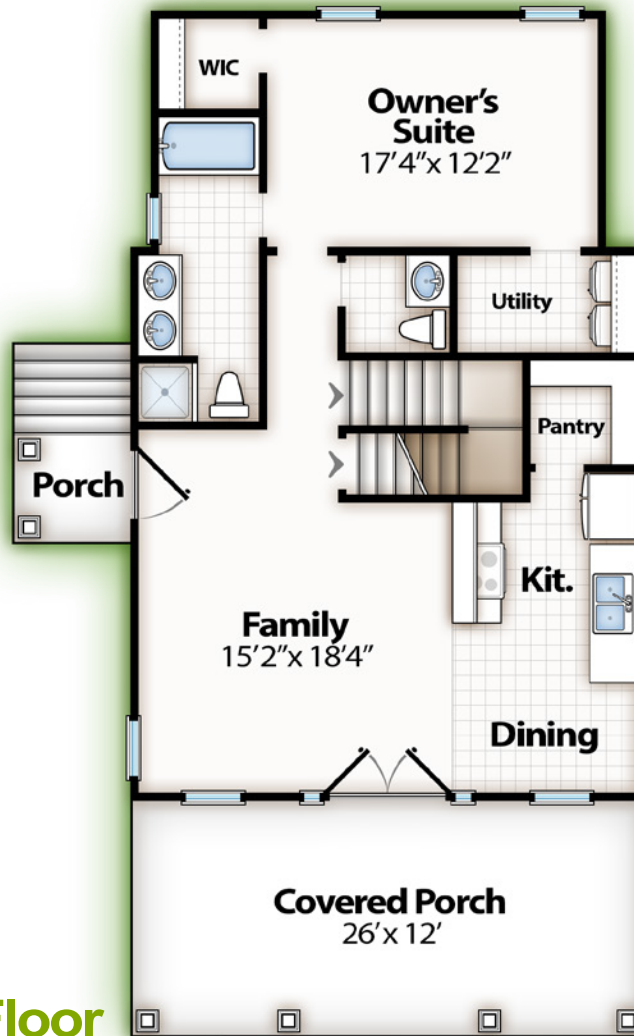


# The Murray



**Optional  
Unfinished  
Basement**

**1<sup>st</sup> Floor**



**2<sup>nd</sup> Floor**

Call 803-900-EPIC for more information, or visit us online at [www.epichomesllc.net](http://www.epichomesllc.net).



All information contained herein is deemed reliable but not guaranteed. All illustrations are artist's depictions only and are not meant to be exact and do not show accurate details as they will appear on the finished product. House orientation is determined by builder. All dimensions are approximate only and may differ from the actual home. No part of this brochure constitutes an agreement of any kind between Epic Homes and you. Elevations & floorplans may be shown with optional upgrades.

