

# The Devonshire



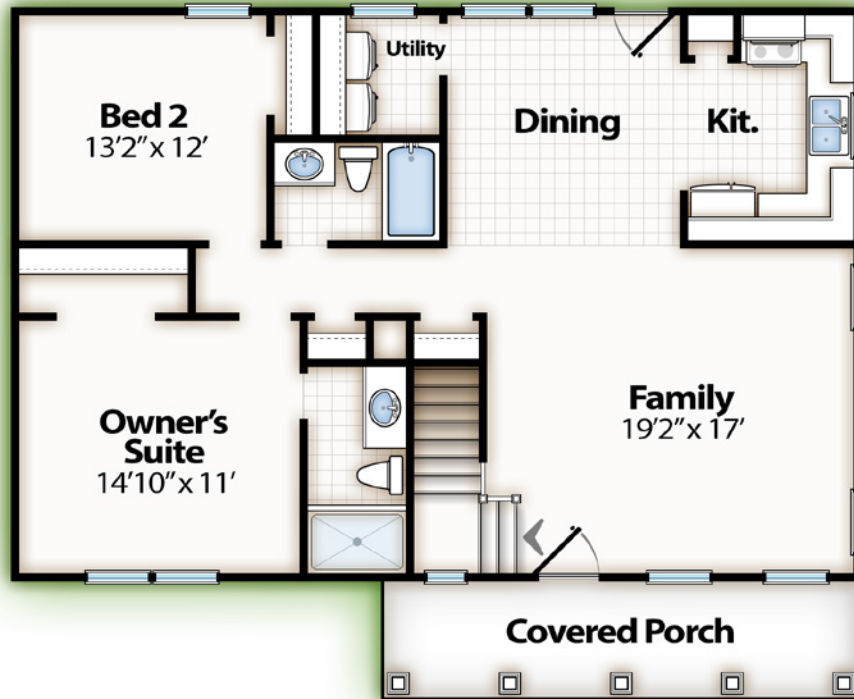
First Floor 1,247<sup>+/-</sup> sf - Second Floor 627<sup>+/-</sup> sf - Front Porch 138<sup>+/-</sup> sf  
Total 2,012<sup>+/-</sup> sf | 4 Bedrooms | 3 Bathrooms



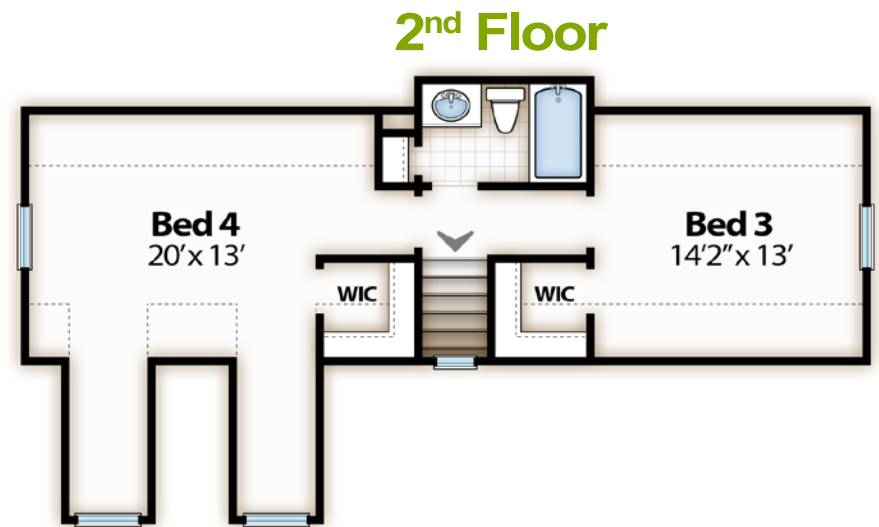
All information contained herein is deemed reliable but not guaranteed. All illustrations are artist's depictions only and are not meant to be exact and do not show accurate details as they will appear on the finished product. House orientation is determined by builder. All dimensions are approximate only and may differ from the actual home. No part of this brochure constitutes an agreement of any kind between Epic Homes and you. Elevations & floorplans may be shown with optional upgrades.



# The Devonshire



**1st Floor**



**2nd Floor**

Call 803-900-EPIC for more information, or visit us online at [www.epichomesllc.net](http://www.epichomesllc.net).



All information contained herein is deemed reliable but not guaranteed. All illustrations are artist's depictions only and are not meant to be exact and do not show accurate details as they will appear on the finished product. House orientation is determined by builder. All dimensions are approximate only and may differ from the actual home. No part of this brochure constitutes an agreement of any kind between Epic Homes and you. Elevations & floorplans may be shown with optional upgrades.